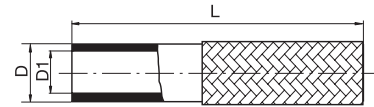
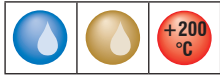


# HOSES

## MATERIAL FKM



Part No.	D1	D	L (m)	Colour	Working Pressure (Bar)	Burst Pressure (Bar)	Bend Radius	
V10	10	16	25	●	15	45	50	1
V13	13	19	25	●	15	45	60	1

### Tube:

Black Viton shore 65°.

### Reinforcement:

Stainless steel overbraid.

### Applications:

Designed for Oil and chemical media for mould temperature controlling.

### Temperature range:

Working temperature: Oil Max +200°C (+392°F)

Working temperature: Water Max +140°C (+284°F).

### Tolerances:

ISO DIN 3302-1 E2.